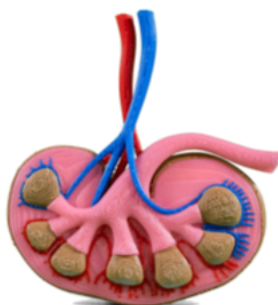


# Mosaic PLA

## Technical Data Sheet

Compatible with Element, Element HT & Array



## Description

Mosaic PLA is an environmentally friendly biopolymer-based material that offers a wide range of applications. Its rigidity and ease of printing make it perfect for rapid prototyping, while its vibrant color options make it ideal for cosmetic parts.

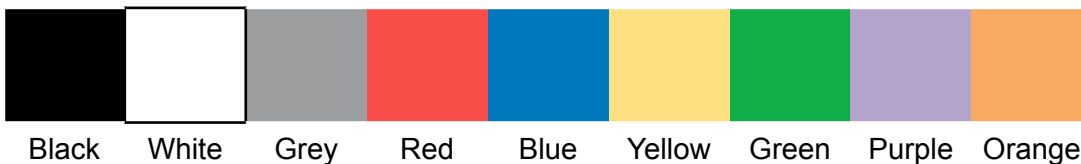
### Key Features

- ✓ Easy to Print
- ✓ Stiff
- ✓ Economical
- ✓ Low Shrinkage
- ✓ Matte Finish

### Sample Applications

- ✓ Prototyping
- ✓ Architectural Models
- ✓ Cosmetic parts
- ✓ Educational Models

## Available Colours



## Filament Specifications

Diameter	Tolerance
1.75 mm	+/- 0.03 mm

## Printing Guidelines

<b>Slicer Profile</b>	Coming soon to canvas3d.io
<b>Nozzle Temperature</b>	215°C
<b>Heated Chamber</b>	Not Recommended
<b>Build Surface</b>	Element Bed Type I with glue stick
<b>Special Considerations</b>	For best results on overhanging geometries, print with the door and/or lid of Element open to encourage more air flow for part cooling

## Storage/Handling Considerations

<b>Hygroscopicity</b>	Low
<b>Drying Temperature</b>	55°C
<b>Drying Time</b>	6 Hours

**Note:** When not in use, spool should be stored in a Mosaic Material Pod or inside a vacuum sealed container.

## Material Properties

<b>Property</b>	<b>Standard</b>	<b>Typical Value</b>
Density	ISO 1183	1.31 g/cc
Tensile Strength, Break	ISO 527	25.85 MPa
Tensile Modulus	ISO 527	1925 MPa
Elongation at Break	ISO 527	31.30%
Heat Deflection Temp.	ISO 75 1.8MPa	51.8°C

## Multi-Material Compatibility

### Automation

Same-material Automated Changeover	With Material Pod
------------------------------------	-------------------

### Supports

Same-material support	Yes
Compatible Soluble Materials	Dissolve LT (water-soluble)
Compatible Breakaway Materials	None

## Contact Information

### Technical Point of Contact

Simon Ho  
Staff Engineer, Manufacturing & Supply Chain  
simon@mosaicmfg.com  
+1 437 261-6922

### Warehouse Point of Contact

Chris Burrows  
Excelsior Integrated  
705 Pleasant St, Lee, MA 01238, United States  
413-637-0600 x 112