

# Mosaic PEEK

## DESCRIPTION

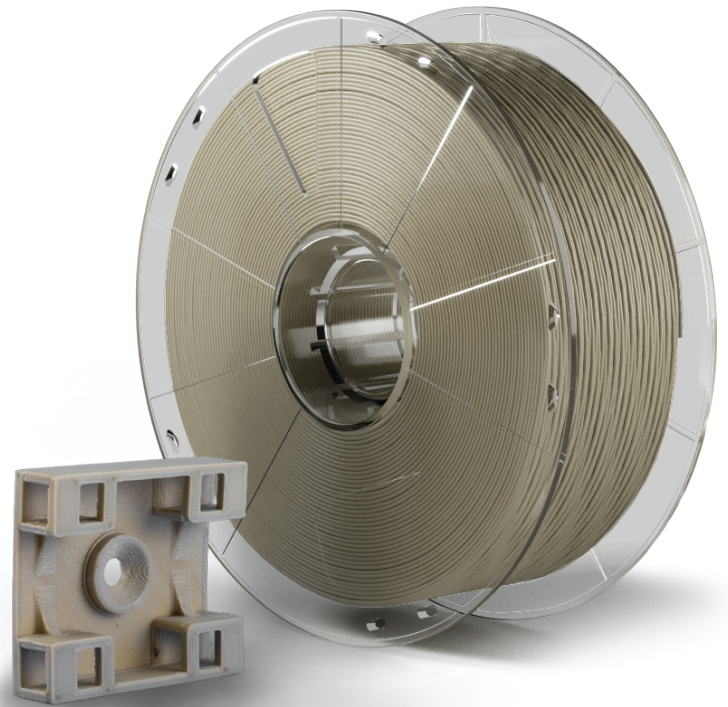
Mosaic PEEK is a thermoplastic engineering-grade material with exceptional strength, durability and low flammability, making it ideal for various industries, including automotive, aerospace, medicine, and dentistry.

## KEY FEATURES

- ✓ Fatigue Resistant
- ✓ Durable
- ✓ Autoclavable
- ✓ High Chemical Resistance
- ✓ High Thermal Resistance

## SAMPLE APPLICATIONS

- ✓ Medical Tools
- ✓ Wire Protections/Shieldings
- ✓ Aerospace Components
- ✓ Dental Instruments
- ✓ Mechanical Parts



## FILAMENT SPECIFICATIONS

| Diameter | Tolerance   |
|----------|-------------|
| 1.75 mm  | +/- 0.05 mm |

## PRINTING GUIDELINES

|                        |   |
|------------------------|---|
| Slicer Profile         | Available on canvas3d.io  |
| Nozzle Temperature     | 400°C   |
| Heated Chamber         | Required  |
| Build Surface          | Element Bed Type II, with glue stick  |
| Special Considerations | Mosaic PEEK can be challenging to print and requires tuning based on part geometry. |

*Note: For best results, parts should only be printed one at a time. If more parts are printed at once, the interlayer adhesion becomes significantly weaker.*

## STORAGE/HANDLING CONSIDERATIONS

|                    |         |
|--------------------|---------|
| Hygroscopicity     | High    |
| Drying Temperature | 70°C    |
| Drying Time        | 6 Hours |

*Note: When not in use, spool should be stored in a Mosaic Material Pod or inside a vacuum sealed container.*

## MATERIAL PROPERTIES

| Property                | Standard | Typical Value |
|-------------------------|----------|---------------|
| Density                 | ISO 1183 | 1.3 g/cc      |
| Tensile Strength, Break | ISO 527  | 92.23 MPa     |
| Tensile Modulus         | ISO 527  | 3654 MPa      |
| Elongation at Break     | ISO 527  | 11.5%         |

|                       |                   |         |
|-----------------------|-------------------|---------|
| Heat Deflection Temp. | ISO 75 (@0.45MPa) | 138.1°C |
|-----------------------|-------------------|---------|

MULTI-MATERIAL COMPATIBILITY

AUTOMATION

|                                    |                   |
|------------------------------------|-------------------|
| Same-material Automated Changeover | With Material Pod |
|------------------------------------|-------------------|

SUPPORTS

|                                |      |
|--------------------------------|------|
| Same-Material Support          | Yes  |
| Compatible Soluble Materials   | None |
| Compatible Breakaway Materials | None |

CONTACT INFORMATION

Technical Point of Contact

Simon Ho  
Staff Engineer, Manufacturing & Supply Chain  
simon@mosaicmfg.com  
+1 437 261-6922

Warehouse Point of Contact

Chris Burrows  
Excelsior Integrated  
705 Pleasant St, Lee, MA 01238, United States  
413-637-0600 x 112